



SOUTH SIDE OF NAVE

FROM EAST TO WEST



The apostle, in a belted garment, appears to be holding a purse. Thus this bearded figure may represent **MATTHEW**.

The broad-shouldered demon has a bushy beard and the sleeves of the garment have buttons.



The apostle holds an open book, and has his head covered. His beard is wavy, rather than curly.

Resembling the wealthy, hatted demon on the north side, the large figure behind has a brimmed hat with drapery brought around to cover his chin. He sports a curled moustache, too.



The bearded apostle holds a scroll in one hand and a pot in the other, and so may represent one of the Gospel writers.

The demon is a cowed monk, with staring eyes and broken teeth, and large clumsy hands.



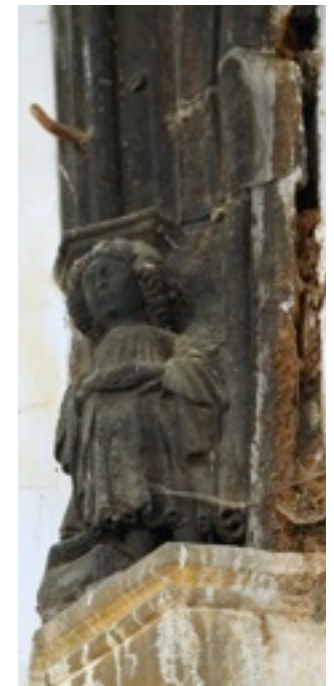
The apostle carrying a staff and has a bag slung over his shoulder. Thus this hatted figure, glancing upwards, represents **JAMES**.

The woman wearing a huge, elaborate cornet head-dress, has claws and a full, heavy face. This sort of head-dress was sometimes used in mediaeval images to symbolize lust or lechery.



The apostle was holding items which, being broken, cannot be identified. His clothes are carefully draped.

In striking contrast is the half-human demon with ape-like ears, large nose and curly beard. His hooded cloak has a collar decorated with oak leaves. He could represent a player in a local drama, and represent the baser side of human life.



Only the small figure survives from this pair. The ledge for the demon is empty.

The carving depicts a child with curling hair, wearing a short garment. Its hands are joined in front.

Photographs by Mike Dixon © 2012.
No part of this leaflet may be reproduced in print or electronic media without permission.